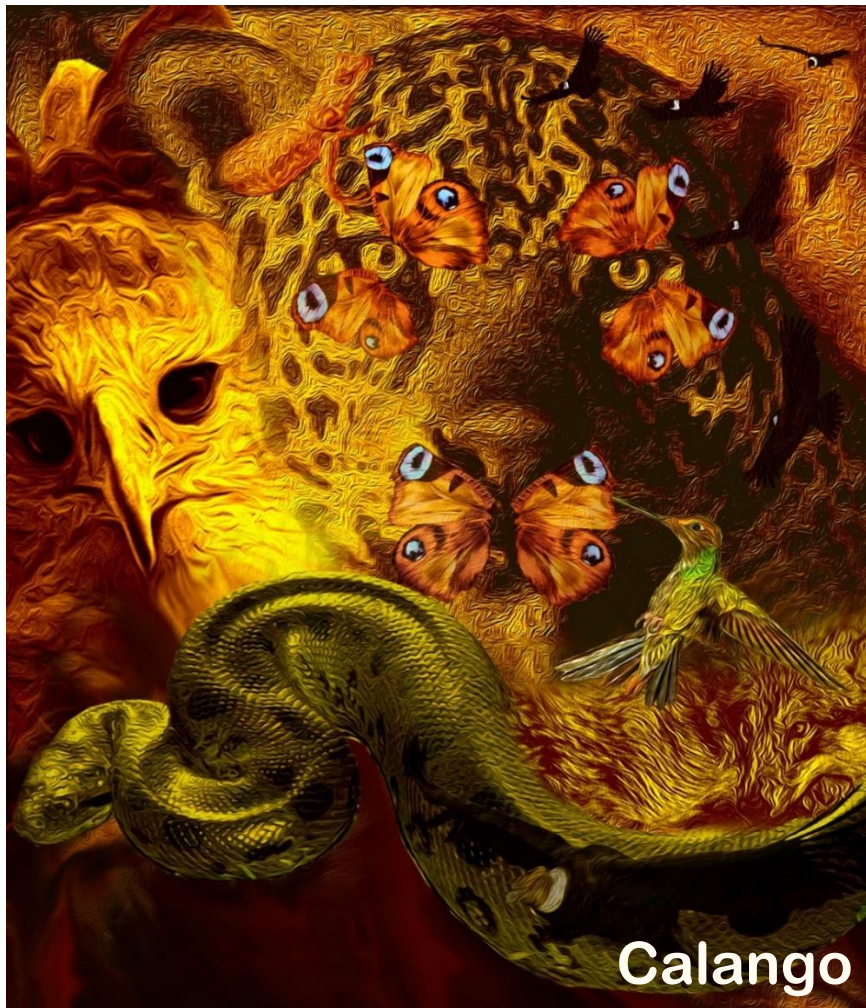


Animales *de Poder*



almasonora

María **Suárez**, *composición* - Mara **Diniello**, *revisión*

Serie americana para arpa solista

- 1. Serpiente del Agua*
- 2. Pluma de Águila*
- 3. Q'inti*
- 4. Calango*
- 5. Mallku y el sol*
- 6. Madre Loba*
- 7. Guerrero Jaguar*
- 8. Papalotl*

Calango

*"dónde estás calango?
no logro verte lagarto escurridizo...
quizá asoleándote sobre una piedra
observas inmóvil el devenir de los tiempos
o tal vez te convertiste en muro o madera
hiedra o arena
antiguo ser que habitaste estas tierras
guardián del hogar
o Brasil está te ouvindo:
trae la palabra de mis ancestros "*



Tune Low C#

Calango

María Suárez, composición
Mara Diniello, revisión

Arpa

$\text{♩} = 50$

f *mf* *f* *mf* *p* *f*

p.d.l.t.

mi Eb 1 1 G# Eb 1

Pedal Buzz

Ab D# F#

accel.

10 **Tempo** $\text{♩} = 30$ *f* *p* *f* *pp* *f* **Tempo**

como un eco

Pedal Slide

D#

26 $\text{♩} = 50$

f *fff* *mf*

B \flat C \flat D \sharp

31 *bisbigliando*

pp *mf*

E \flat C \sharp A \flat D \flat C \flat D \sharp

38

E \flat C \sharp E \flat D \flat C \flat A \sharp

45

pp *p*

E \flat

50

rit. Tempo

mf *f* *p* *mp dolce*

D \sharp — b

55

E \flat A \sharp — D \sharp —

59

$\text{♩} = 40$

p E \flat *f* m.i.

A \flat D \flat \emptyset

64

\emptyset E \flat A \sharp E \flat D \sharp B \sharp — B \flat

69

p *f* *mf*

4

3

E \flat

Detailed description: This system covers measures 69 to 72. The treble clef part begins with a piano (*p*) dynamic and features a melodic line with a slur and a fermata over the first measure. The bass clef part has a similar melodic line with a slur and a fermata. At measure 70, the treble clef part changes to a forte (*f*) dynamic and includes a triplet of eighth notes. At measure 71, the treble clef part changes to a mezzo-forte (*mf*) dynamic and features a wavy line indicating tremolo. The bass clef part has a triplet of eighth notes and a chord marked E \flat . A dynamic hairpin connects the *f* and *mf* markings.

73

f *mf*

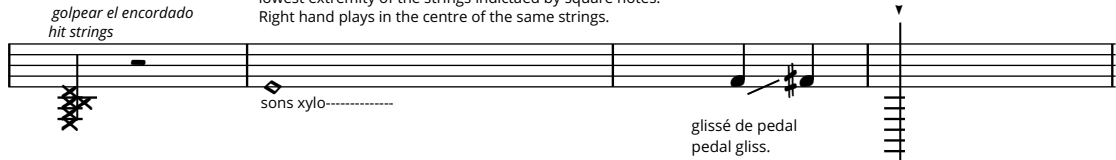
rall

G \sharp E \flat

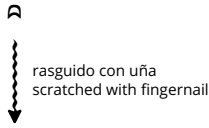
Detailed description: This system covers measures 73 to 76. The treble clef part starts with a forte (*f*) dynamic and includes a slur and a fermata. The bass clef part has a similar melodic line with a slur and a fermata. At measure 74, the treble clef part changes to a mezzo-forte (*mf*) dynamic and features a wavy line indicating tremolo. The bass clef part has a chord marked G \sharp and another marked E \flat . A dynamic hairpin connects the *f* and *mf* markings. The word "rall" is written below the bass clef part in measure 74.

Simbolos musicales-Musicals symbols

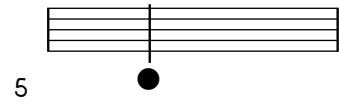
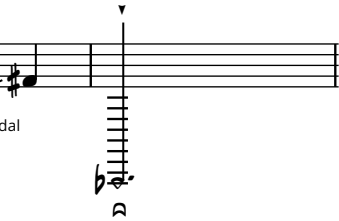
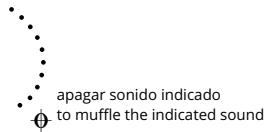
◊ Sonidos xilofónicos, mano izquierda presiona fuertemente la extremidad de la cuerda con cabeza de rombo. Mano derecha toca en el centro de las mismas cuerdas.
Xylophonic sounds, left hand firmly pressed on the lowest extremity of the strings indicated by square notes. Right hand plays in the centre of the same strings.



pellizcar con uñas y deslizar hacia la tabla armónica
pinch with nails and slide to harmonic table



1 — 1 glissé de dedo
to play by slidings the finger from one string to another



La mano golpea sobre la tabla armónica
The hand strikes the sounding board

tr trino a dos manos
two-handed trill

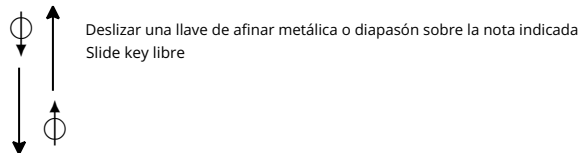
⚡ sonido metálico producido sosteniendo el pedal en equilibrio entre dos casillas
metallic sounds produced by holding the pedal in balance halfway between two notches

tr trino de pedal
pedal trill

⚡ guía de pedales
Pedal chart

p.d.l.t. sonido guitarrístico, producido tocando muy cerca de la tabla armónica
guitaric sounds produced by playing very close to sounding board

+ 1 pulsar con pulgar izquierdo mano abierta
play with left open hand



◊ apagar el encordado
to muffle the strings

m.d mano derecha
right hand

✂ broches sobre cuerdas efecto campana
bell effect rope brooches

m.i mano izquierda
left hand

* golpe de baqueta blanda sobre la bordona
soft stick hit on metal string

~~~~~ Deslizar baqueta de goma por la caja de resonancia  
Slide a rubber drumstick across the harmonic board

• respiración, breve  
short breath

⌈ para colocar simultáneamente un grupo de notas  
to place simultaneously a group of strings

↓ Silbido, deslizar hacia la tabla armónica con yema sobre la nota y equivalente al valor indicado.  
whistling sounds, slide on the wire string, occupying a duration of time equivalent to the value of the note indicated.  
*sib.*

⌌ place a metal paper mute around the note indicated at the end of the string on the harmonic table  
Colocar sordina de papel metálico alrededor de la nota indicada en el extremo de la cuerda sobre la tabla armónica

⌌ Quitar sordina de papel metálico  
remove mute from metallic paper